



**ENERGY HUB**

**OIL SERVICES CO.**

*Iraqi Company with License No : 87752-02*

***www.energyhub-iq.com***  
***info@energyhub-iq.com***  
***+9647835082510***  
***+971526318457***  
***Basra ,Iraq***



# **ENERGY HUB**

**OIL SERVICES CO.**

*Engineering , Procurement & Construction  
( EPC )*

*Management Total Solution  
( PMC )*

*Project supply division  
pipes , Valves & fittings  
( PSD )*

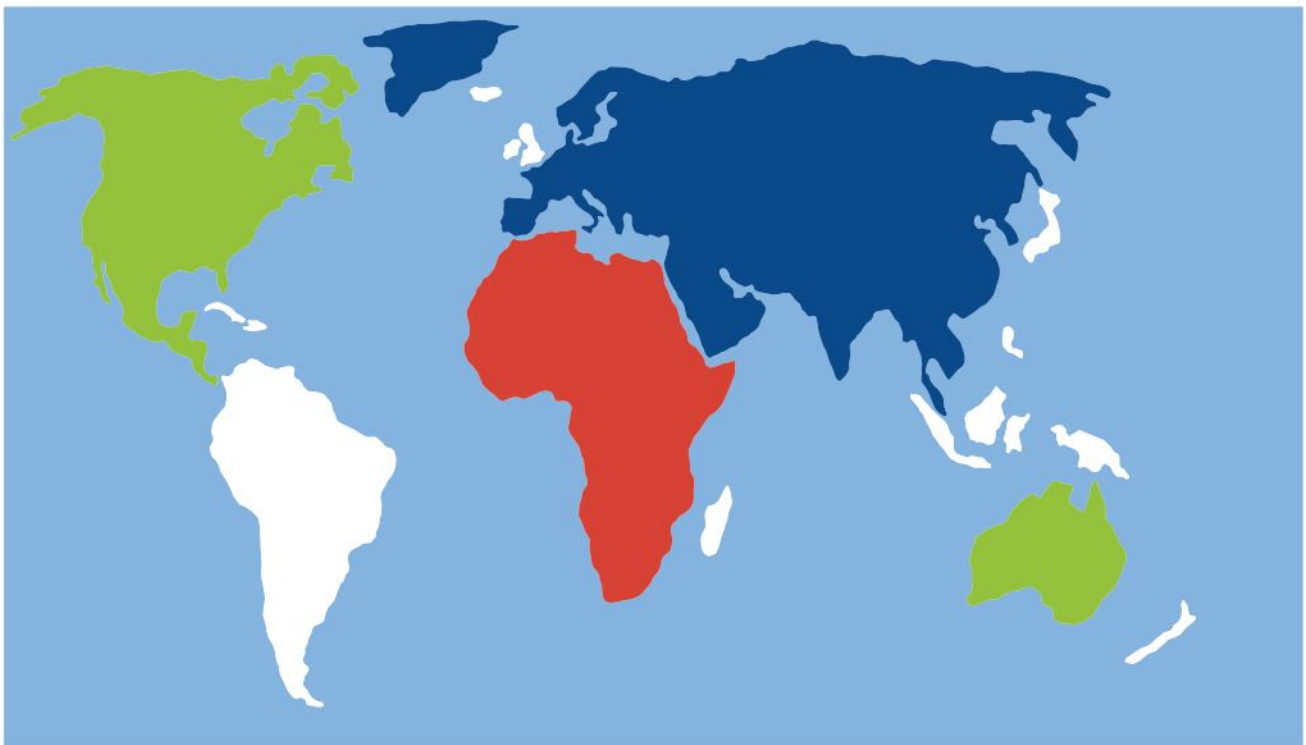
*Maintenace Services*

## ***Energy Hub***

Iraqi Company established international provider of diverse range of services and solutions to the energy sector, with international standards using leading technology and resources

## ***Our Solutions & Services***

- Projects Supply
- Engineering, Procurement and Construction
- Process Packages
- Cathodic Corrosion Protection
- Agents for global mill
- Maintenance Services



## ***Our Strengths***

Our Strength is a combination of the Local Content and International Presence, Strategic Relationship with our key stakeholders, risk management process and financial commitment-towards the project .

## ***Preface***

Energy - Hub Company professional industrial

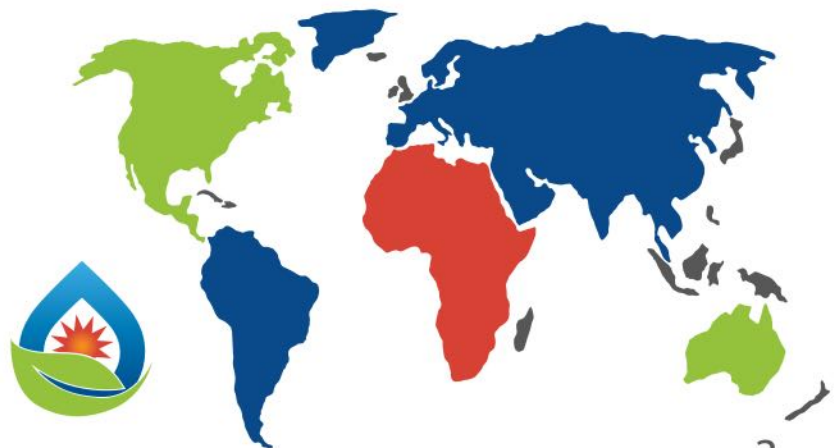
---

solutions provider ,offering high quality Engineering, Procurement ,Construction & Project Management services to Oil & Gas,, Petrochemical & Process, Power & Water Industries. The sphere of activity is focused in providing expertise and turnkey solutions to clients throughout in Middle east Quality Management, Occupational Health and Safety Management & Environment Management is integral part of all services provided by us .

Energy Hub is driven to meet high quality standards ,delivering quality projects on time .an in budget. Energy Hub believes that the best recipe for success is honesty & integrity mixed with large dose of commitment and hard work. Energy Hub strongly believes that the success of any project depends ultimately on Clients Satisfaction. With an unwavering commitment to Client Satisfaction

we are pledges to “Do the Job Right”...Every Time Optimized Engineering Solution- Cost Effective Procurement- In Budget & Quality Construction

This the Trade Marks of Energy-Hub



# Capabilities



Energy-Hub offerings encompasses design, construction, project management, Commissioning, operations & maintenance support of customized international Standards compliant Industrial Projects

Energy-Hub has in house capabilities & expertise to provide full project cycle solutions to Oil & Gas sector, from Technology Selection to complex Front End Engineering design, Construction, Installation & Commissioning

For our clients this means a single interface throughout the Construction life of the facilities, significantly reducing the risks, costs & time involved when dealing with multiple vendors

Our Strength is Optimized Design & Engineering, Cost Effective Global Resources for Procurement, Just in Time Delivery at Project Site, local experience, in Budget & Quality Construction know how

## ***Vision Mission & Aim***

### ***Vision***

TO BE FOREMOST ENGINEERING, CONSTRUCTION & PROJECT  
MANAGEMENT SERVICE PROVIDER

### ***MISSION***

ENGINEER THE INDUSTRIAL  
GROWTH FOR SUSTAINABLE SOCIETY

### ***AIM***

TO BE VALUED HIGHLY BY OUR CLIENTS  
EMPLOYEES, VENDORS & SOCIETY





## ***Why Energy Hub***

- .High Accuracy
- .Timeliness Of Delivery
- .Quality Control
- .Powerful Project Management System
- Full Support From Other Specialized
- .Departments
- Continuous Development For Engineers

## ***We ARE***

- Engineering Contractor. Joint Venture
- Partner. Project Management Contractor.-
- .Client Representative . Subcontractor

## ***WE DELIVER***

- .Conceptual Engineering
- .Tender Documents
- .Architectural Specs
- .Bill of Quantities
- .Construction Detailed Drawings
- .Presentations





## *As an Engineering and EPC Main Contractor*

---



### ***Energy Hub providing fully***

Integrated engineering, procurement, construction supervision and project management services for the petroleum, petrochemicals, power and other industries. Energy Hub is well placed to undertake lump sum EPC contracts to implement small to medium sized onshore midstream, downstream and new field development projects like pipelines, tank farms, pumping and compressor stations, early production facilities, metering systems, small and medium sized power plants in challenging environments

Energy Hub EPC Division is committed to meet high quality standards We have established strong network of relationships with world class specialized engineering and our construction

We also provide additional services camp development, temporary site facilities and utilities provision, fencing, construction of access roads and buildings for the .oil and gas field



These factors along with our HSE and security program combined with local capabilities, risk management, supply chain management and financial commitments have given us an edge to provide lump sum EPC services

## ***Scope of Services with Engineering Division***

---

Engineering

Process Engineering

Mechanical Engineering

Electrical Engineering

Instrument and Control Engineering

Civil/Structural

Piping Engineering

Pipeline Engineering

Procurement

Worldwide Purchasing Expediting Supplier Quality Surveillance Traffic and Logistics Material Management Project Management & Construction Supervision

## ***Project Management Consultant (PMC)***

---

Overall Project Management Contract/Subcontract Administration Project Financing Administration Planning and Scheduling Cost Estimation and Budgeting Progress Evaluation and Reporting Cost Control Material Monitoring Corrective Actions to maintain Schedule and Budget .

We provide our specialized services in all possible contractual roles; as a main contractor, joint venture partner, E & I installation contractor, engineering contractor, project management contractor or subcontractor .

## ***Electrical & Installation***

The Installation provide installations, pre-commissioning, commissioning and management services of electrical, instrumentation, telecommunication, fire protection and detection systems, mechanical and civil work relevant to E&I for .the petroleum

### Scope of Services with E & I

Installations, pre-commissioning, commissioning and start-up activities of electrical and instrumentation, fire detection/protection and telecommunication systems .

The installations include power generation, distribution systems, transformers, lighting system, grounding & lightning protection, cabling systems, race ways, instrument calibrations, instrument control systems (PLC, DCS, ESD, PCS, VMS, HIPPS, SCADA, etc ...)

Installations of civil work related to E&I including substations and control room buildings, earth work, concrete and finishing activities .

Installations of mechanical work related to E&I including HVAC System and fire fighting for buildings .

## ***E&I RESOURCES***

E&I Installations division has its own professional / qualified engineers and technicians to perform the installation, pre-commissioning and commissioning activities. All engineers and technicians have the experience in the oil & gas installation field. Meanwhile, the division has the option of hiring labors and any additional qualified technicians from the local market according to workload and site needs .

The Installation Division has its own sufficient / adequate site temporary facilities to assist in performing the project tasks. Energy Hub provides site temporary facilities and resources in accordance with every site condition and location .

The Installation Division has the option of purchasing and/or renting the required suitable site temporary facilities, equipment and site accommodation from the local market in case of customer special requirements or to suit specific site conditions .



## ***Single Window Solutions***

Concept to commissioning to operation Energy-Hub incorporates systems approach that considers total project requirements. Application is only part of an evaluation. We include client's current & future requirements. We view the system maintenance as an inherent component of .the total facility

PROJECT CONCEPT ANALYSIS •

FIRST COST •

OPERATIONAL COST •

LIFY CYCLE COST •

ENERGY REQUIRED •

Client's requirement, Installed Cost, Operational Cost & Energy goals are optimized to Achieve true value to the Project. We strive to be seamless extension of our client's office, to meet their goals







## ***Engineer -Optimized Solutions***

Energy-Hub company provides Engineering Solution to our Clients  
Energy

Hub guarantees cost effective Design & Engineering Solution to our clients

We take pride in our local knowledge in the countries we operate & our commitment to Client, Local & International Standards

Design & Engineering teams provide multi-discipline project engineering services for grass-root projects as well as up-gradation. These services include Design- FEED & Basic Engineering, Feasibility Studies, Process & Utility Evaluation/ Selection

Job Cost Estimating ,Process Design , Facility Integration ,Civil & Structural Design ,Piping Design/Stress Analysis ,Storage Tanks Design , Mechanical Design ,Equipment Selection & Specification

Electrical & Instrumentation (E&I)

Design Process & Instrumentation

Diagrams (P&ID)

Process Flow Diagram (PFD) Generation

As Built Drawing Generation

Engineering details/ Drafting Services

Engineering Services are totally Client dependent, with single objective of providing true project value engineering to client based on optimum & innovative solutions.  
Engineering Disciplines :

*process*

*Civil & Structural*

*Mechanical* Static & Rotary Equipments

*Piping*

*Electrical & Instrumentation*

*Control & Automation*



## *Outsourcing*

Energy-hub Engineering Resources are available for outsourcing. Depending on client's requirement, we can place dedicated qualified professionals support

We have flexibility to support projects of any size, from short-term assignments to comprehensive Design, Detailed & CAD Services for complex engineering projects



## ***Procurement***

Procurement -Global Resources & Just in Time Energy -Hub's Global procurement resources enable us to provide our client with. Cost effective & Quality Sourcing of materials & equipment's



## ***Solution***

Energy-Hub Procurement Engineers & Team are fully conversant with all aspects of compliance with engineering requirement, freight forwarding, custom duty requirement, duty exemption procedures & local road transportation

We have .fully functional procurement team in Iraq , UAE & USA We have expediting and quality assurance teams in all countries we operate

Just in Time delivery of material & equipment's is the Goal of our Procurement Team

## ***Project supply division ( PSD ) pipes , Valves & fittings***

---

Pre Qualify Appropriate Suppliers Preparation of Project QHSE Requirements

Request for Quotation and Finalisation Contracts

Quality Negotiation Control

FAT : Factory Acceptance Test Packing & Transport Survey Production Control Procurement Management (Negotiation, Deadlines, Custom Clearance , Storage, Etc

### ***Valve***

---

Energy Hub is supplying a wide range of Manual Valves & ESDV (Ball, Gate, Globe, Check, Butterfly) through our long term agreements with International manufacturers and stockiest with Different Material and Grades

,CF8 ,304L, F321 L, F LCB, LCC, F316 ,WCB, A105N, WCC, LF2 F53 ,F51 ,F11 ,F9 ,M, F5 CF8C, CF8

## ***Ball Valves***

Flanged, NPT, SW, BW , 2500 # lb to 150 # ``48 Range: ½`` up to Connections

Ball: Floating and Tuning- Split Body, Top Entry, Side Entry and Fully Welded

5351 A, BS 6 6D and API Standard: API



## ***Gate , GlobeT and Check***

Needle Valves

15,000 and 10,000 ,6,000 :Class

``2/1-1 Size: ¼`` up to

6D, ANSI , ASME Standard: API



### ***Forge & Cast***

5352 BS ,602 6D, API Standards: API  
1868 BS ,1873 BS ,1414 BS,

### ***Butterfly Valves***

Regular and Offset Design

5155 BS ,609 Standard: API

Type: Wafer, Semi Lug, Single and Double Flanged  
Double Block & Bleed Valves (DBB)

3 Range : ½ up to

Lbs 2500 – 150 : Class

6D, ANSI, ASME Standards: API



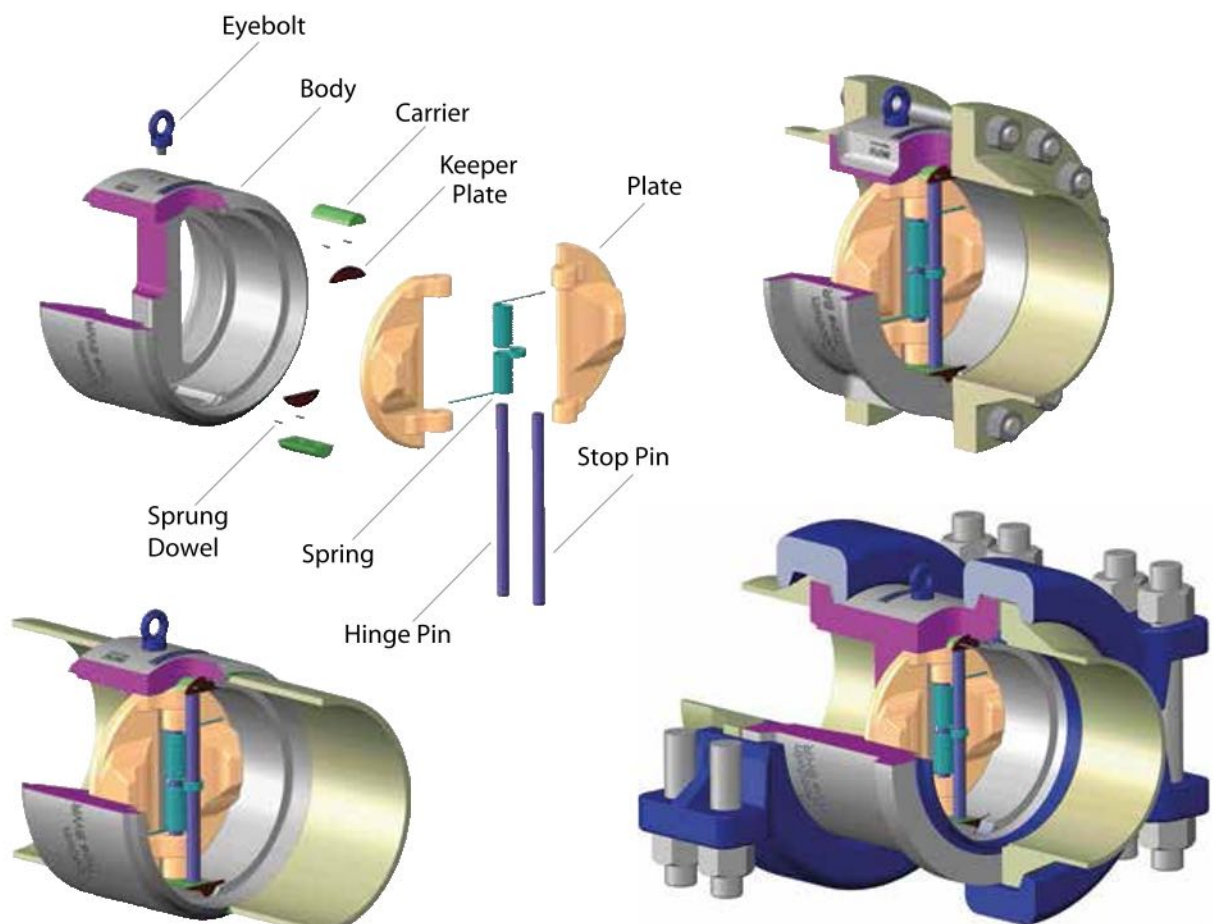
## Agent

### Goodwin International Valve UK Manufacture

For check valve with Dual plate and Axial type Energy Hub  
Goodwin agent's for Iraq Market  
Goodwin International, by having Two check valve products  
-the Goodwin Dual Plate Check and the Goodwin Non  
Slam Axial  
Check Valve, can offer a cost effective solution to meet  
the vast majority of customer requirements and  
applications

Please check our presentation in below link

<http://www.checkvalves.co.uk/en/products/dual-plate>



## Agent

### *NOREVA Valve Germany Manufacture*

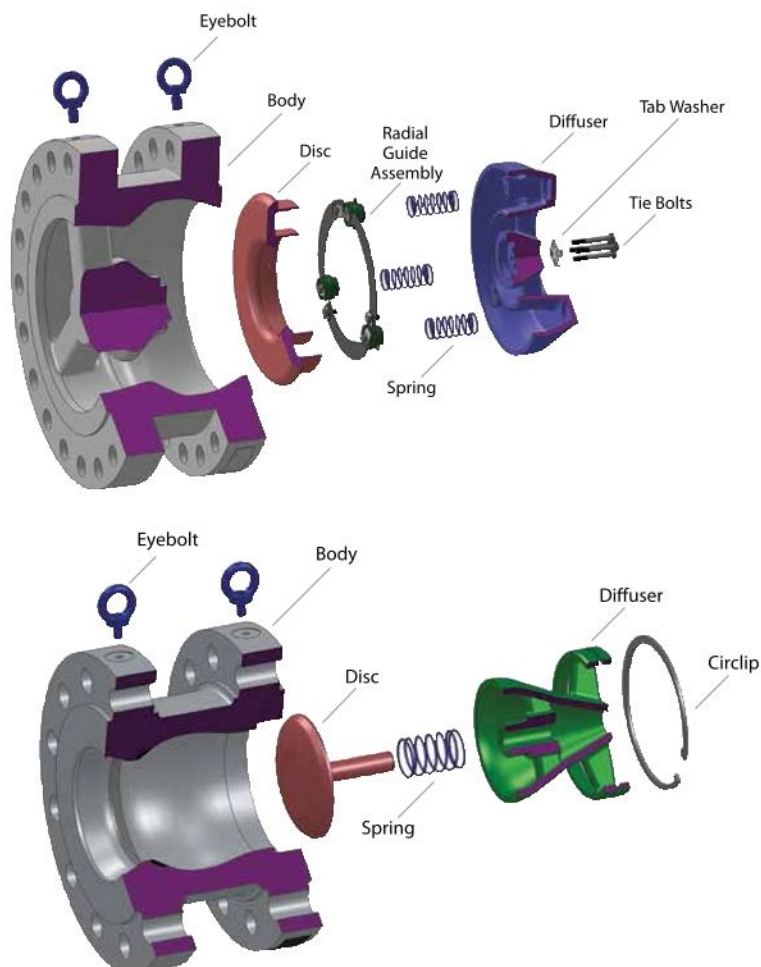
Energy Hub Noreva agent's for Iraq Market .

To guarantee the high quality level of our nozzle check valves, all main production steps will be executed at our workshop  
Incoming inspection - Final Machining - Pressure Testing - Corrosion Protection - Assembly - Final Inspection - Packing – Despatch

Please check our presentation on below link

<http://www.noreva.de/english/content>

[htm.03Unternehmen/unternehmens-video/video01/](http://www.03Unternehmen/unternehmens-video/video01/)



## **BUTTERFLY VALVES**

Butterfly, Wafer-type and Diaphragm Valves in cast/ductile iron, carbon steel, alloy steel, stainless steel and any exotic material according to ASTM, API, BS, DIN, ISO standards ,3202 DIN ,5156 BS ,609 API ,594 Construction standards to API ASME B16.34

Optional lining: PTFE, PFA, ETFE, Viton, ebonite, silicone, EPDM, .butyl and other rubbers

#1500 to 150 Rating from ANSI ."64 to "2/1 Sizes from Test- .16.34 Pressure-temperature rating according to ASME B ing and inspection according



## *Pipes*

Energy Hub supply Seamless and Welded Pipes in Different Range

``72 Range: ½`` up to

Execution: Seamless and Welded (ERW, HFW, SAW, DSAW)

,Standard :API, ASTM

ASME, BS

,Material & Grade: CS, Alloy, SS

,5L Grade B, API LB, A106 5 API

,316L/316 .Gr A312 ,6 .Gr A333

S32750 ,304L, A790M, UNS-S31803/304

5L, Grade B, API LB, A106 5 Material & Grade: CS, Alloy, SS, API

304L, A790M,/304 ,316L/316 .Gr A312 ,6 .Gr A333

S32750 ,UNS-S31803



## **Energy Hub Supply Fitting, Flanges Stud Bolts & Gaskets**

---

### ***Fittings***

wide range of Thickness and 72 Range: ½" up to  
Spec Ends: BW, SW, PE, Threaded, Flanged

75 Standards: ANSI, ASME, MSS SP 304L/304

Material: CS, SS, Alloy, WPL6 /316 S32750 ,316L, UNS-S31803



## Flanges

wide range of 2500- 150 #`72 Range: ½` up to  
Thickness and Spec

Type:WN, SW, Blind, Threaded & SORF

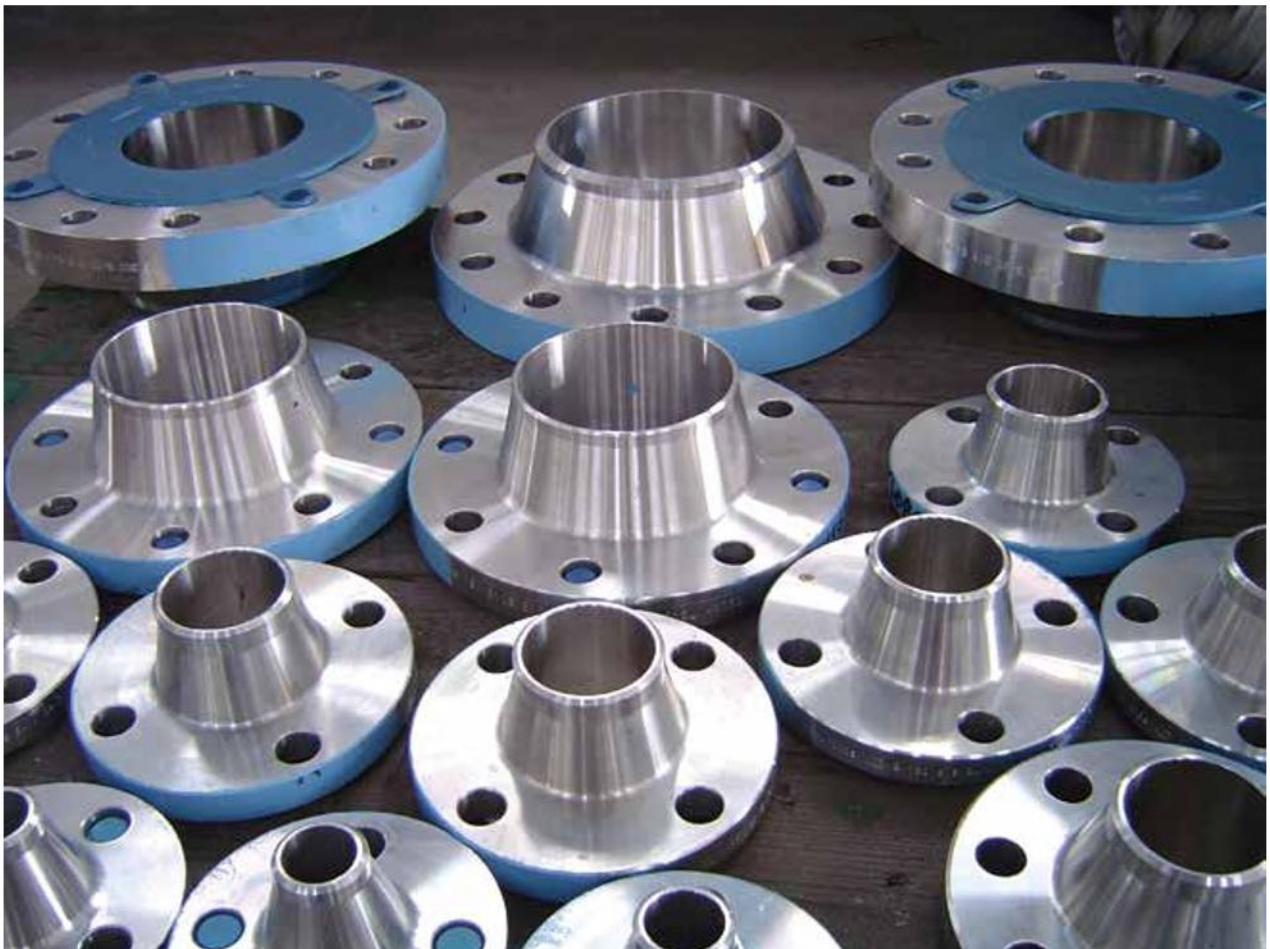
Standards: API, ASME, ASTM, BS

Material: CS, SS, Alloy, Duplex St.St

F53 ,316L, F51/316,304L /304 ,LF2 ,Grades:A105

,Special: Spectacle Blinds, Drip Rings, LWN, Nuzzles

Insulation Flanges, Orifice Ancor Flanges, Tube Sheets



## ***Stud Bolts***

Dia. 1/2" to 3" Range: 1/2" to 3"  
And wide range of Lengths

Bolt Types: Fully and Partially Threaded Stud Bolt complete with Nuts

Bolt Material and Grades:  
2HM & 2H, B7M/B7  
7M SS/4L7M/L7

---



## ***Gaskets***

Spiral Wound, Ring Joint, Tanged Insert, PTFE Products, Rubber Sheets

---



## *Supply Plates Range*

3x12m 1x6m to : Size Range

100mm 4mm Upto : Thickness Range

,Gr.C, A515 Gr.C, A285 A283 ,Material Grades: A36

316Letc/316 ,304L/304 A240 , A516

These Plates can be supplied as per project specifications

from Europe origins , with additional testing like  
HIC, SSCC, UT, etc

As per project requirements and specification





## ***Supply Beams Range***

---

Universal Beams , American Wide Flange Beams, IPE, Angle, UPN  
m 914 - 25 : ,Equal Angles, Un equal Angle Size Range  
EN ,36 43A, ASTM A .Gr 4360 JR, BS S275 10025 Material : EN  
40 SS 3101 JIS K2G3 S355 10025

in various "8/200mm Rolled Steel Angles and Channels up to  
grades and materials as per BS, EN an JIS Standards

in "20/500mm Hollow Sections in Square and Rectangular up to  
various grades and materials as per BS, EN and JIS standard

We provide our customers with supporting documentation  
ensuring clear identification of all products we supply. We  
adhere to European, American and Far Eastern standards in the  
industry Structural Steel materials are offered in many supply  
conditions includin

Quenched & Tempered (Q&T)

Normalized

Thermo Mechanically Control Rolled (TMCP)

As Rolled

Additionally certain steels can be tested in the simulated post  
weld heat treated condition (PWHT )

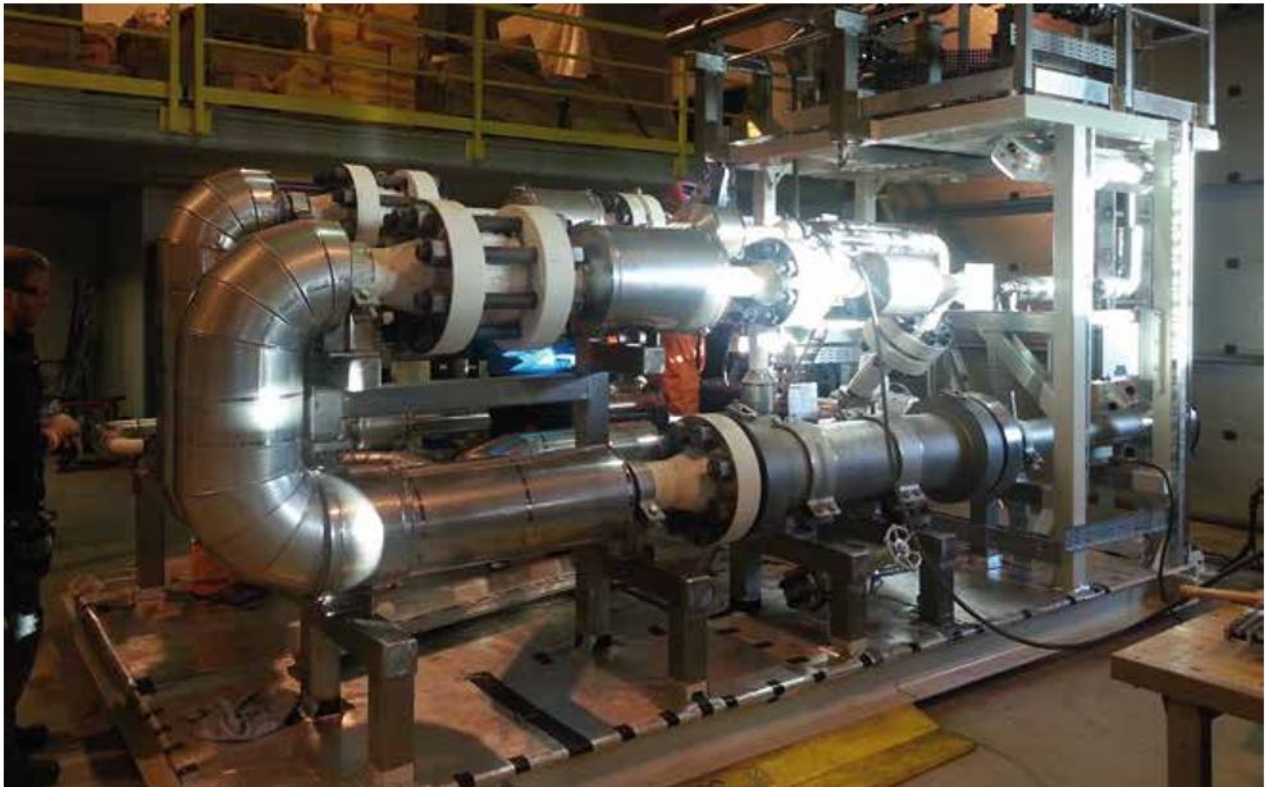
## SKID MOUNTED COMPRESSED AIR, GAS & LIQUID DRIERS

The compressed air is expensive, however, to use compressed air without a dryer, makes the cost of operation prohibitive. It .therefore, pays to install a dryer  
Energy Hub can support you from (AVL) in the field of Compressed Air/ Liquid / Gas Drying

Type of Dryers Manufactured as below

- Heatless Type
- Refrigerated Type
- Embedded Heater Type
- Blower Regen
- Split flow type
- Heat of compression type

- Liquid dryers
- Gas dryers
- Low pressure dryers
- Vent dryers
- Liquid dryers

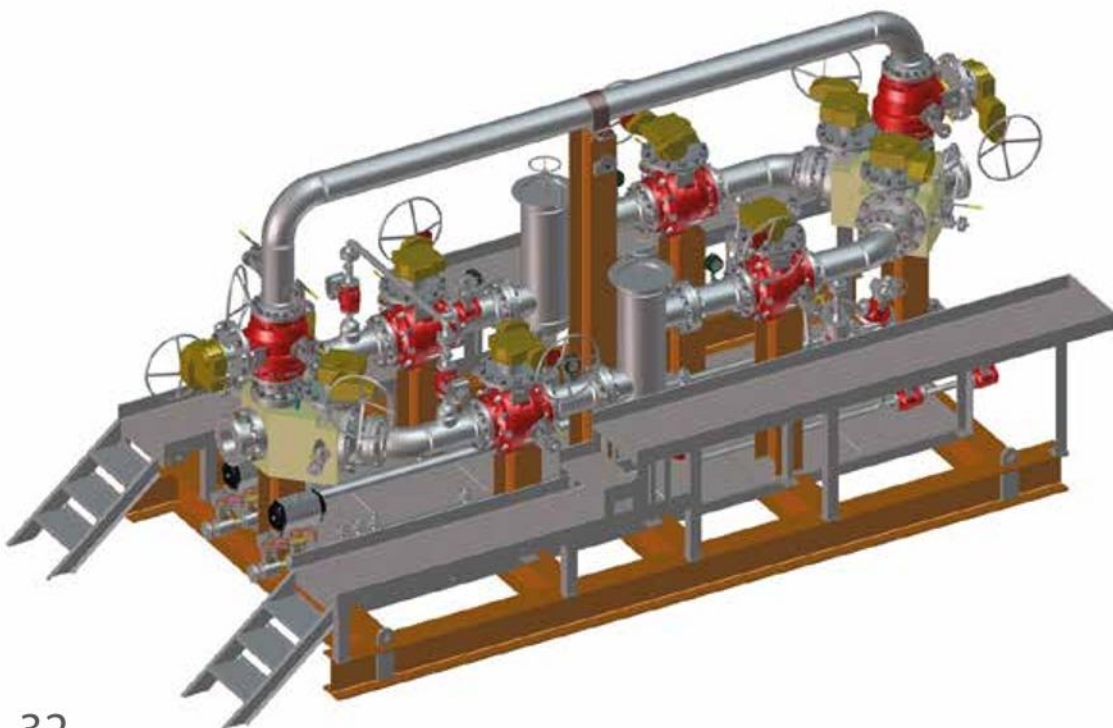


## ***SKID MOUNTED MODULAR PROCESS UNITS***

---

Energy Hub support you with Skid Mounted units for air, gas & liquid dehydration

Apart from design, engineering and manufacturing of Air/Gas & Liquid dehydration skids, Energy Hub can support you with the preferred packager for numerous design, engineering companies in the field of Oil & Gas, Power, Compressor Manufacturers etc. for the fabrication, assembly and packaging of MODULAR PROCESS UNITS for various applications. For such design, engineering agencies, Energy Hub provides complete solution of fabrication, testing, assembly including that of free issue / proprietary material. Over and above the equipment fabrication Energy Hub 's scope of work includes assembly and final testing of mechanical, electrical, instrumentation, cabling as per the client / end user's requirement. Critical / Proprietary parts for such packages / skids are usually supplied by the client / End user



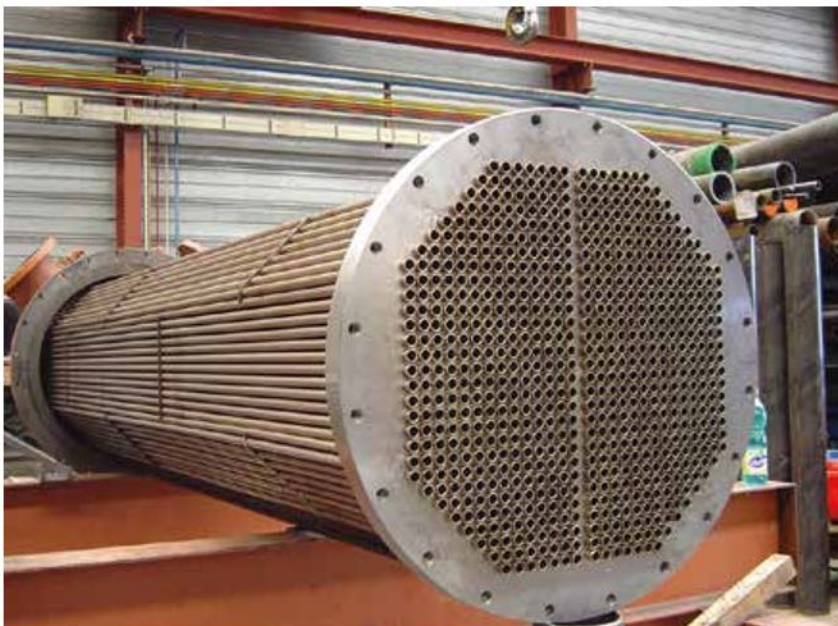
## ***SHELL & TUBE HEAT EXCHANGER***

---

The Shell and Tube is the most common type of heat exchanger used in the process, petroleum, chemical and HVAC industries, it contains a number of parallel tubes inside a shell. Shell Tube heat exchangers are used when a process requires large amounts of fluid to be heated or cooled. Due to their design, shell tube heat exchangers offer a large heat transfer area and provide high heat transfer efficiency

As its name implies, this type of heat exchanger consists of a shell (a large pressure vessel) with a bundle of tubes inside it. One fluid runs through the tubes, and another fluid flows over the tubes (through the shell) to transfer heat between the two fluids. The set of tubes is called a tube bundle

There are many different types or designs of shell and tube heat exchangers to meet various process requirements. Shell and Tube heat exchangers can provide steady heat transfer by utilizing multiple passes of one or both fluids



## ***PRESSURE VESSELS***

We have well equipped design and engineering facilities to undertake design, fabrication of pressure vessels for LPG/Propane/Carbon Dioxide/Ammonia and other Cryogenic fluids and miscellaneous other process equipments viz. Column, Silo, packed towers, rotary vacuum paddle dryer, reactors with stuffing box or mechanical seal, pressure filter, blender, receiver etc. in Carbon, Alloy and Stainless Steel construction conforming to IS / ASME / BS / DIN and as per SMPV (U) Rules having installations on both on-shore and off-shore facilities

The largest capacity of single piece vessel fabricated was of 333M3 design pressure Kg/Cm<sup>2</sup> 20 .and for approx

We have carried out fabrication of pressure vessels under IBR inspection of large autoclaves which are satisfactorily in use for Bar 15 steam curing at a pressure of up-to



## ***Business Process***

Our courteous, dedicated and responsive sales team along with our vastly experience Technical department provide client the best possible service promptly and efficiently. Also our sales team is proficient in proposing alternate/ substitute products to attune to project norms .The core of this team is a blend of personnel with experience and knowledge from engineering, construction, manufacturing, and piping design services industries. Our team is

Together, they bring to customers the service of integrating and packaging of piping and engineering products supply services

Our employees are experts in areas such as sourcing, purchasing, logistics, stock management, distribution, transport and the application of engineering products like Pumps, Valves, etc. In short the company covers the entire supply chain; being it is in the start of production or at the final stage



[www.energyhub-iq.com](http://www.energyhub-iq.com)  
[info@energyhub-iq.com](mailto:info@energyhub-iq.com)  
+9647835082510  
+971526318457  
Basra ,Iraq

